

# CB450 Shipping Container

## Specification

<b>Model:</b>	CB450
<b>Dimensions:</b>	450*210*215cm
<b>Color:</b>	RAL1014
<b>Window:</b>	Sliding Concession windows, with gas struts
<b>Electrical:</b>	220V/50HZ
<b>Net Weight:</b>	1,850kg
<b>Gross Weight:</b>	20.50kg
<b>Material:</b>	Frame: Galvanized steel Exterior wall: Corrugated steel Insulation: 25mm polyurethane spray foam Interior wall: ACM Workbench: 201 stainless steel Floor: Non-slip aluminium checkered floor
<b>Electrical System:</b>	EU-compliant electrical fixtures Electrical panel board Circuit breaker Power sockets Generator receptacles Electrical wires Interior light bars
<b>Lighting:</b>	Interior lighting units LED Sign
<b>Water Sink Kits:</b>	2 compartment water sinks Commercial faucet for cold & hot water Floor drain
<b>Water Supply System:</b>	24V water pump 25L food-grade clean water tank 25L food-grade waste wastewater tank

<b>Kitchen Equipment:</b>	Front stainless steel workbench with cabinets Rear stainless steel with back splash 2.1m bench fridge Gas stove with 4 burners Gas fryer Ice cream machine Coffee maker Cash drawer Countertop display Drink cooler
<b>Warranty:</b>	1 year warranty for free
<p>For more information on this model, such as size options, pricing, standard configurations, customization and upgrades, production time, delivery terms, etc., please email <a href="mailto:sales@etofoodcarts.com">sales@etofoodcarts.com</a>. Our sales agent will contact you within a day or even sooner to address any inquiries you may have.</p>	

Etodevice

## Details



- Front -



- Side -



- Front -



- Side -



- Side -



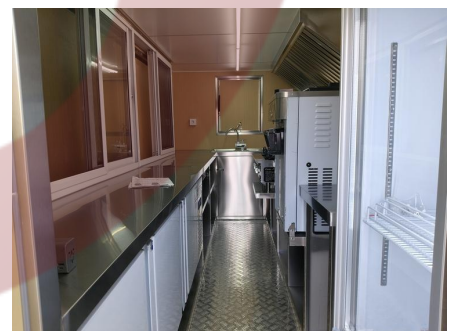
- Front -



- Side -



- Side -



- Interior -



- Interior -

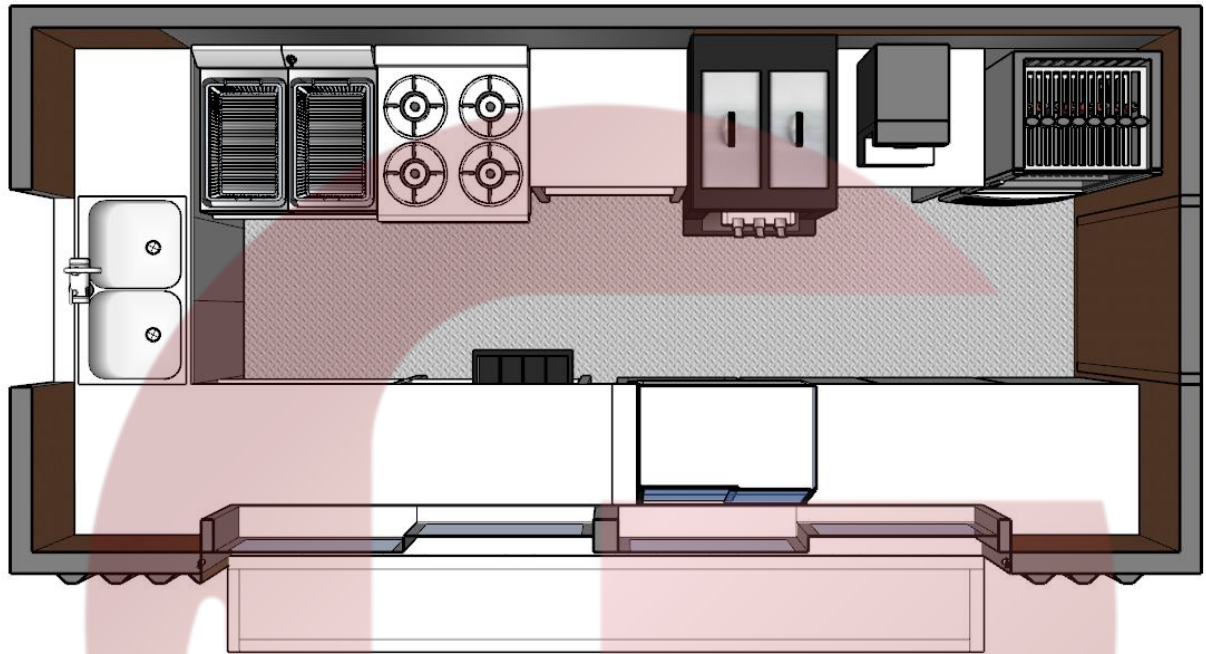


- Interior -



- Sinks -

## Floor Plan



Etodevice



## Design

